

Application Instructions  
Medical Product for Normalizing Human Serotonin Balance  
Sterile Hydrocolloid Mineral Plaster (HMP)  
**SCHALI® - Myalgia (Muscular pain)**

NANO  
SCHALIPRODUCT  
LASER

NANO  
SCHALIPRODUCT  
LASER

NANO  
SCHALIPRODUCT  
LASER

NANO  
SCHALIPRODUCT  
LASER

NANO  
SCHALIPRODUCT  
LASER

NANO  
SCHALIPRODUCT  
LASER

NANO  
SCHALIPRODUCT  
LASER

NANO  
SCHALIPRODUCT  
LASER

NANO  
SCHALIPRODUCT  
LASER

NANO  
SCHALIPRODUCT  
LASER

NANO  
SCHALIPRODUCT  
LASER

NANO  
SCHALIPRODUCT  
LASER

NANO  
SCHALIPRODUCT  
LASER

## **Application Instructions** **Medical Product for Normalizing Human Serotonin Balance** **Sterile Hydrocolloid Mineral Plaster (HMP)** **SCHALI® - Myalgia (Muscular pain)**

### **INGREDIENTS:**

HMP SCHALI®-Myalgia is a hydrocolloid mineral plaster based on SCHALI® active mineral formulation (SCHALI-T/10-S titanium dioxide [TiO<sub>2</sub>]).

Titanium dioxide, Sodium carboxymethyl cellulose, Elastomer, Dioctyl adipate, 100% Hydrogenated petroleum resin, Polyurethane film, Polyethylene terephthalate.

### **MECHANISM OF ACTION:**

HMP SCHALI® Hydrocolloid Mineral Plaster is intended to restore and maintain normal serotonin balance in humans.

HMP SCHALI® exerts a synergistic effect to human body and promotes function of human serotonin receptors. In contact to warm human skin, hydrocolloid mineral plaster induces natural heat response, that triggers generating active oxygen molecules [O<sub>2</sub>(a<sup>1</sup>Δ<sub>g</sub>)] on the surface of crystals of distinct type oxides (TiO<sub>2</sub>) – semiconductors, containing plenty of reactive centers for energy transfer. Energy that is emitted by generation of active oxygen forms, is transferred to human body, where it induces and maintains cascades of bio-resonance wave processes, resulting in better function of serotonin receptors. Control over serotonin reuptake inhibition is enabled by selectively blocking serotonin absorption in presynaptic membrane. Hence, re-balanced level of neurotransmitter in the synaptic cleft may intensify neurotransmission in serotonergic synapses.

Serotonin balance also has a strong health beneficial effect and helps in relieving symptoms of different pathological conditions.

Normal function of human serotonin receptors contributes to both restoration of homeostasis and better function of central nervous system, resulting in less fibromyalgia manifestations.

### **INDICATIONS:**

- Pain in spinal soft tissues in degenerative conditions (osteocondrosis and other dorsopathy manifestations)
- Peripheral neuropathy and other peripheral nervous system disorders
- Bruise and trauma in soft tissues
- Accelerating regeneration and healing processes after surgery
- Clinical manifestation of myositis
- Muscle spasm and cramp, muscle tissue ischemia
- Musculoskeletal pain and fibromyalgia manifestations
- Undue fatigability, burnout conditions, exhaustion.

Application of the product is also recommended to healthy, active humans for maintaining normal serotonin level, better CNS and other human systems function, and effective protection from harmful environmental impact.

### **COMPATIBILITY WITH OTHER MEDICATIONS:**

This medical product may be used in a complex therapy and is well compatible with other medications.

It's strongly recommended to consult your attending medical doctor for re-dosing or cancelling your prescribed medications while using the product.

### **METHOD OF USE:**

Attach the product onto posterior neck surface on VII cervical vertebra (mostly prominent neck-bone), on acupuncture point(s) (See Scheme of Acupuncture Points) and/or over problem site(s), and wear the product several days continuously. Do not remove the product for night time or while sleeping, taking bath or shower. The product is waterproof, resistant to temperature drop and may be worn for 3 to 7 days averagely. Feeling of warmth in the contact site is a normal reaction and requires no product removal. The first effect is to expect within 10-40 min. Duration of application course depends on individual response.

### **SIDE EFFECTS:**

No side effects.

No product dependence. No rebound syndrome.

### **PRODUCT FORM:**

The product includes a hydrocolloid pad impregnated with SCHALI® active mineral formulation and placed in the middle of a fixing part made of an environment-friendly transparent polymeric material and hypoallergenic adhesive. Both sides of the product are covered with protective sheets. The product is placed into a protective bag with tear-off control.

### **STORAGE CONDITIONS:**

Keep the product in the intact protective bag at below +25°C, with no contact to odorous and chemical substances.

Prohibited wearing the product in sauna, steam bath and solarium.

Keep away from direct sunlight.

Do not use while sunbathed.

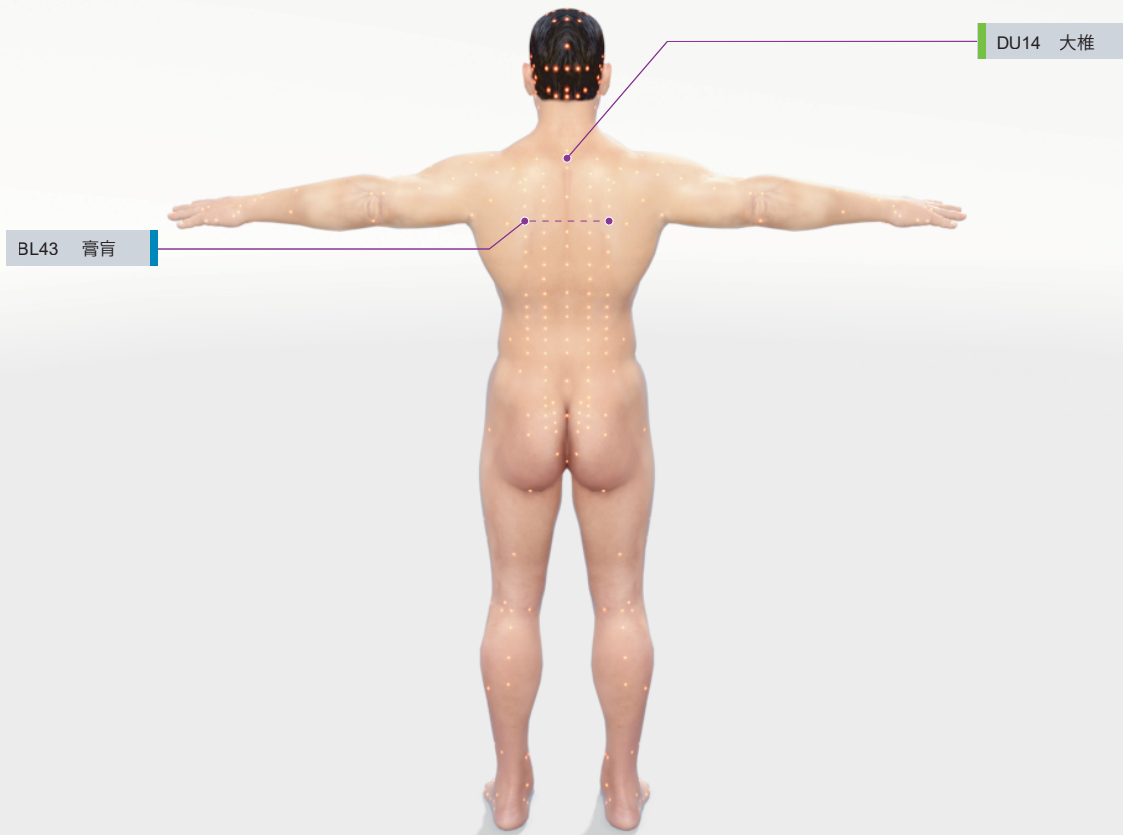
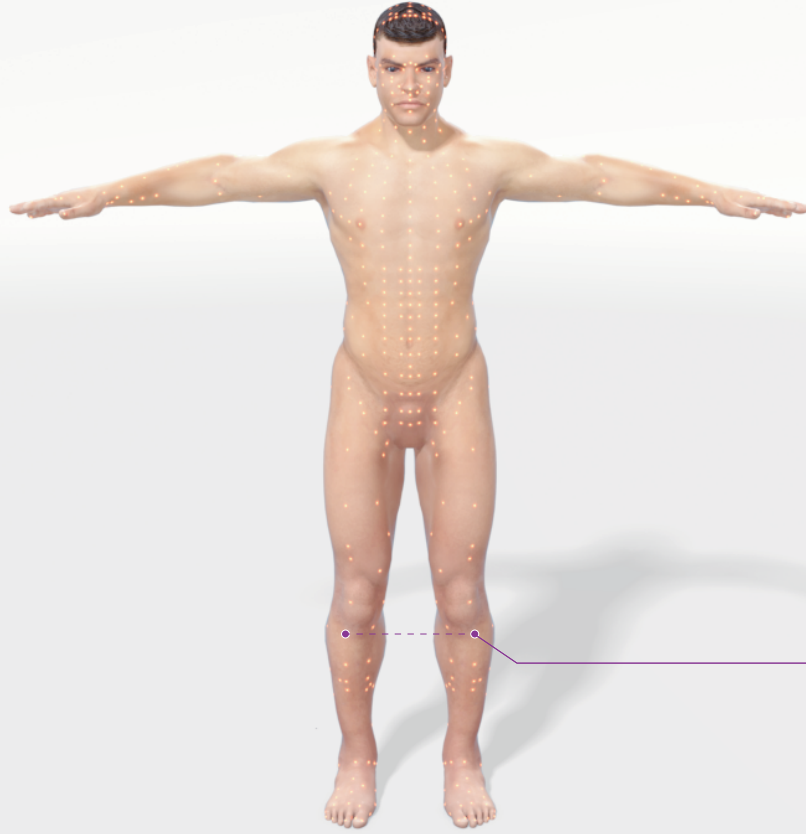
### **SHELF LIFE:**

Shelf life is 3 years from the date of production.

Do not use the product after expiry date specified on the package.

**HMP SCHALI®** Hydrocolloid Mineral Plaster is made under license No. 286-S

## Scheme of Acupuncture Points



The product is intended for application onto active energy points in accordance with the WHO Acupuncture Therapy guideline (1993).  
For more details please see our webpage [www.schalipharma.com](http://www.schalipharma.com)



SCHALIPRODUCT  
LASER

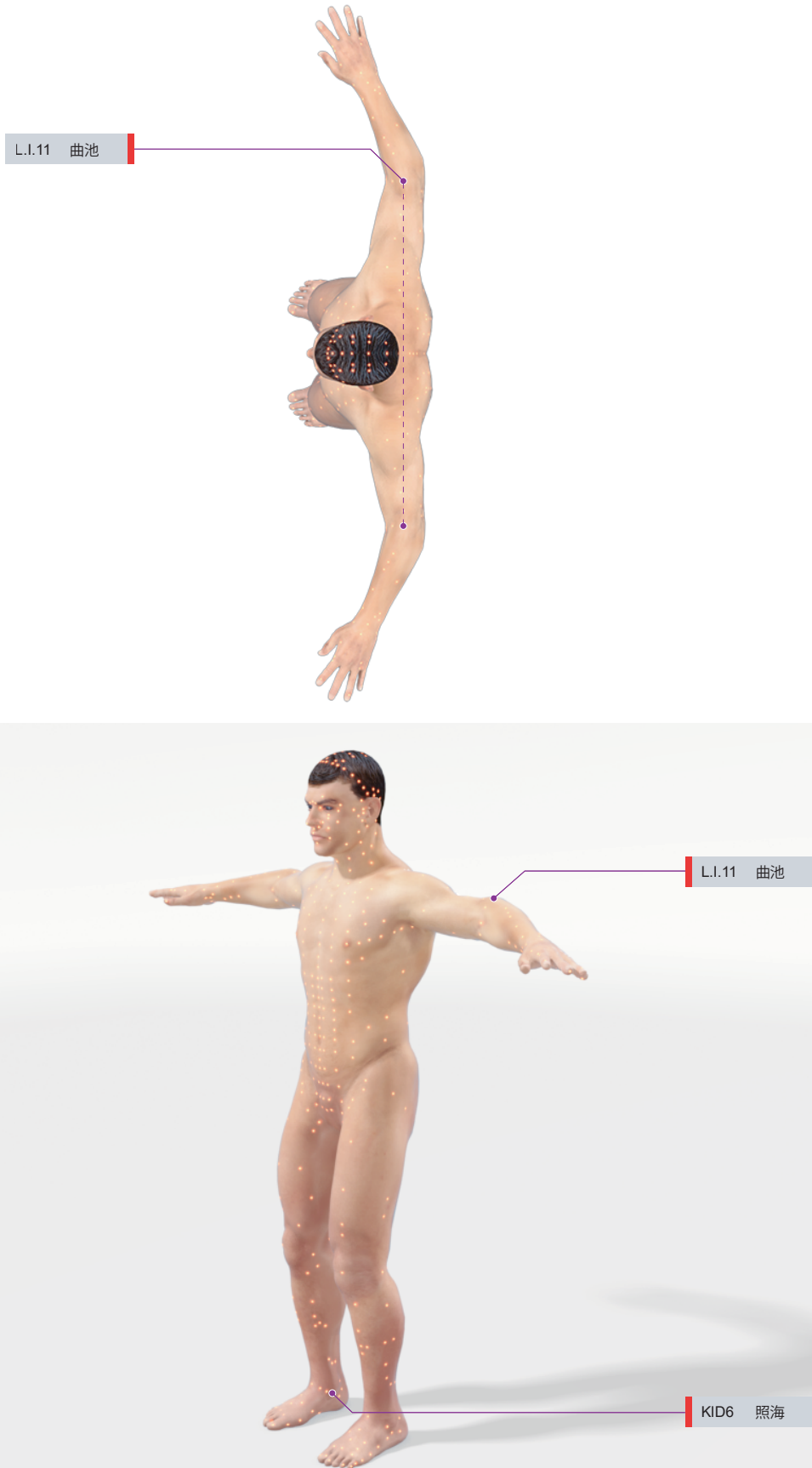
NANO  
LASER  
SCHALIPRODUCT

NANO  
LASER  
SCHALIPRODUCT

NANO  
LASER  
SCHALIPRODUCT

NANO  
LASER  
SCHALIPRODUCT

## Scheme of Acupuncture Points



The product is intended for application onto active energy points in accordance with the WHO Acupuncture Therapy guideline (1993).  
For more details please see our webpage [www.schalipharma.com](http://www.schalipharma.com)



SCHALIPRODUCT  
LASER